

Case Study

Greater Lawrence Sanitary District

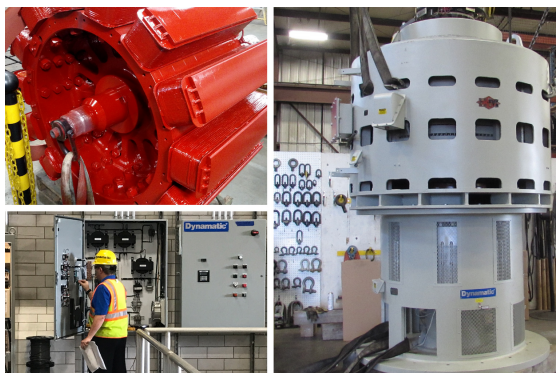
North Andover, Massachusetts

PROBLEM

Four pump motors installed in 1974 were starting to fail. These were brushless, synchronous motors and retrofitting VFDs was going to be tricky and expensive. Two existing 1250HP motors were equipped with eddy current drives already. The other two 800HP motors were installed as constant speed units.

SOLUTION

Refurbishing the pumps, motors and eddy current drives proved to be the most cost-effective resolution. The client also chose to add variable speed capability to the smaller motors by retrofitting two new Dynamatic® ECDs. All bearings, carbon brushes, and slip rings were replaced, and worn surfaces were machined to "as new" status. DSI/Dynamatic also supplied a new EC-2000 controller that was compatible to the total system and programmable to the specific use.



Dynamatic®
DRIVE SOURCE INTERNATIONAL, INC.