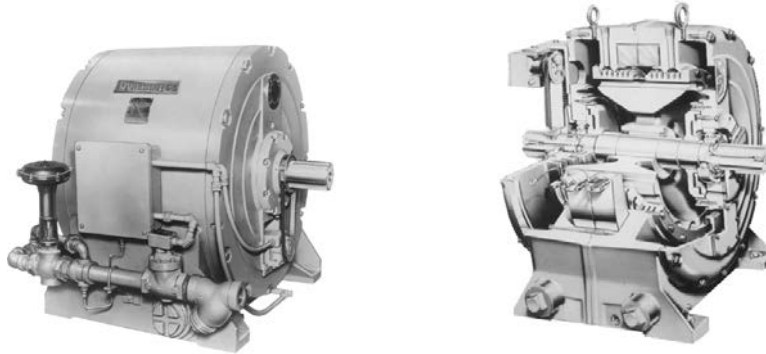


Specialty Products

**LIQUID COOLED COUPLINGS
WC-215 through WC-2253
200 to 2,000 HP**

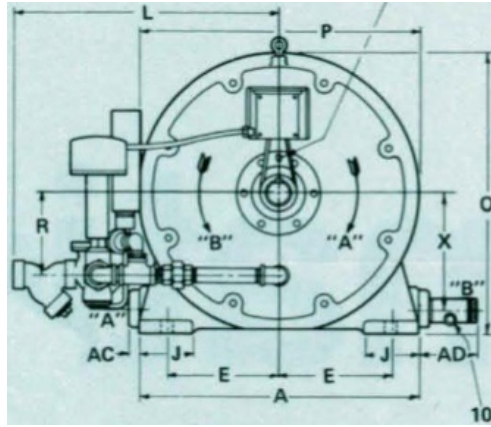
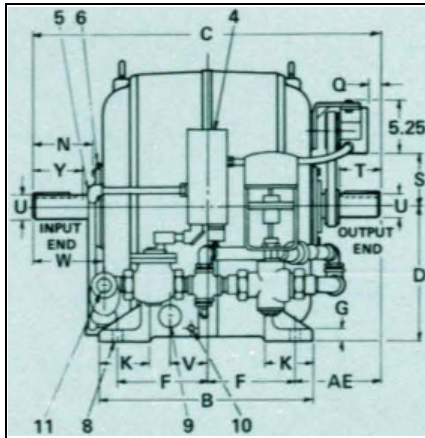


Dynamatic® heavy-duty drives provide stepless adjustable speed with full load torque, continuously available, over a wide speed range. Standard ratings are included in the table below. The basic drive is horizontal, foot mounted, stationary field, liquid-cooled, equipped with externally lubricated anti-friction bearings and automatic water piping. These ruggedly constructed drives require no brushes, slip rings or commutators.

Model	Torque at Slip RPM (Pounds-Feet)						Therm. Cap. (HP)	Normal Max. Speed RPM	Control Size	Cooling Water GPM	
	40	50	60	75	1150	1750				Bypass	Max
215	310	380	435	500	990	1000	300	1800	3	-	30
2163	490	580	660	780	1590	1525	450	1800	4	3	45
2164	650	750	840	975	2375	2325					
2165	750	875	1020	1200	2350	1975					
2172	1025	1200	232	1520	2990	2950	600	1800	3	5	60
2173	1250	1475	1650	1925	2880	2300					
2192	1525	1760	1980	2275	4250	4150	800	1800	4	6	80
2193	1750	2030	2300	2700	3800	3150					
2212	2450	2650	2800	3100	5100	4600	1000	1800	7	9	100
2213	2800	3200	3575	4050	4900	3775					
2232	3450	3950	4350	4900	7300	6300	1250	1800	8	10	125
2233	4500	5150	5800	6500	8100	6800					
2252	5250	6000	6600	7400	9500	8500	1800	1200	8	10	180
2253	6400	7500	8400	9200	10800	9400					

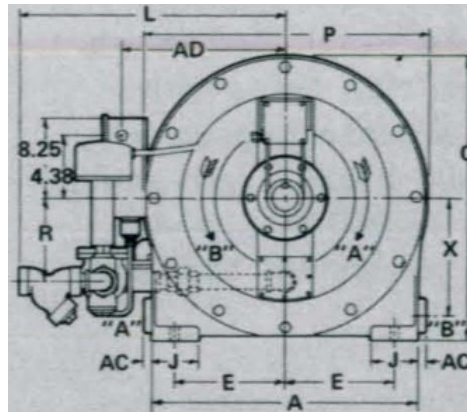
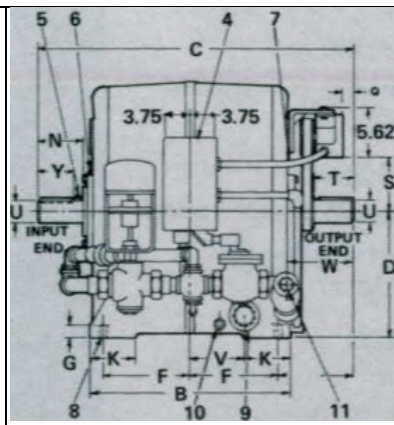
Benefits:

- Efficient Operation - A separate motor can operate at full voltage; no need for step down transformers.
- Ratings - From 200 to 2,000 HP.
- Quiet Operation - Totally enclosed drive has no loud wind noise from internal cooling fans.
- Wide speed ranges - Designed to provide wide stepless ranges without blowers.
- Long operating life - The design allows torque to be transmitted by electromagnetic field without friction or wear.
- Low maintenance costs - The only physical connections are four industrial bearings that need only occasional lubrication.
- Reliable operation - Horsepower ratings are based on continuous duty 24 hours a day, 7 days a week, using conditions of 90° F inlet water.
- Factory backup - Availability of replacement parts and service for many years of reliable operation is assured by our distribution network.



Models:
215
2163
2164
2165

Models:
2172
2173
2192
2193
2212
2213



Model WCS	A	B	C	D ¹	E	F	G	H ³	J	K	L	N	O	P	Q
215	25	17.38	28.00	13.50	10.50	7.44	1.12	1.00	4	4.75	22.50	4.25	26.18	25.38	--
2163 2164 2165	25	20.00	31.25	13.50	10.50	8.75	1.12	1.00	4	4.75	23.06	5.06	26.18	26.75	.25
2172 2173	28	21.50	33.00	14.50	12.00	9.50	1.25	1.12	4	4.50	29.50	5.38	29.32	29.56	.62
2192 2193	30	22.00	34.75	17.25	13.00	9.50	1.25	1.12	4	5.00	28.50	5.50	34.00	33.44	1.00
2212 2213	32	27.12	40.88	17.25	14.00	12.06	1.25	1.12	4	5.00	35.00	6.06	34.25	34.06	1.50

Model WCS	R	S	Shaft Extension				V	W	X	Z ¹¹	AB ⁹	AC	AD	AE
			T ²	Y ²	U ³	Keyway								
215	7.62	6.25	4.25	3.50	2.00	.50 x .25	3.00	6.75	10.62	1.00	2.50	1.00	--	7.06
2163 2164 2165	7.62	6.25	4.50	3.75	2.25	.50 x .25	3.75	3.50	10.68	1.00	3.00	1.56	--	7.25
2172 2173	8.50	7.81	4.75	4.75	3.00	.76 x .38	5.88	2.25	11.62	1.25	3.00	1.56	--	7.25
2192 2193	10.00	8.75	5.00	5.00	3.38	.88 x .44	6.00	9.06	14.12	1.50	3.50	1.62	--	8.25
2212 2213	10.00	8.50	5.50	5.50	3.75	.88 x .44	8.50	6.50	14.12	2.00	3.50	1.62	--	8.75

¹ Dimension will never be exceeded. When exact dimension is needed, liners up to .05in. may be required.

² Maximum usable shaft length.

³ Shaft diameter tolerance $\pm \frac{.000}{-.001}$

⁴ Water piping, clutch field and governor generator leads junction box. Furnished opposite standard on request.

⁵ Grease inlet for pilot bearing. Grease fitting can be used in and of input shaft if desired.

⁶ Lubrication inlet for input shaft bearing.

⁷ Lubrication inlet for output and support bearings

⁸ Four mounting holes "H" diameter.

⁹ Water discharge "AB" pipe tap. Use water discharge "A" for rotation "A". Use water discharge "B" for rotation "B".

*See sheet No. 021-2013 for larger couplings.

¹⁰ Immersion bulb (1" pipe tap) must be mounted in water discharge side of machine.

¹¹ Water inlet "Z" pipe tap.